

## *Section VII. Drawings*

---

# **ARCHITECTURAL PLANS**

---




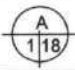
PERSPECTIVE

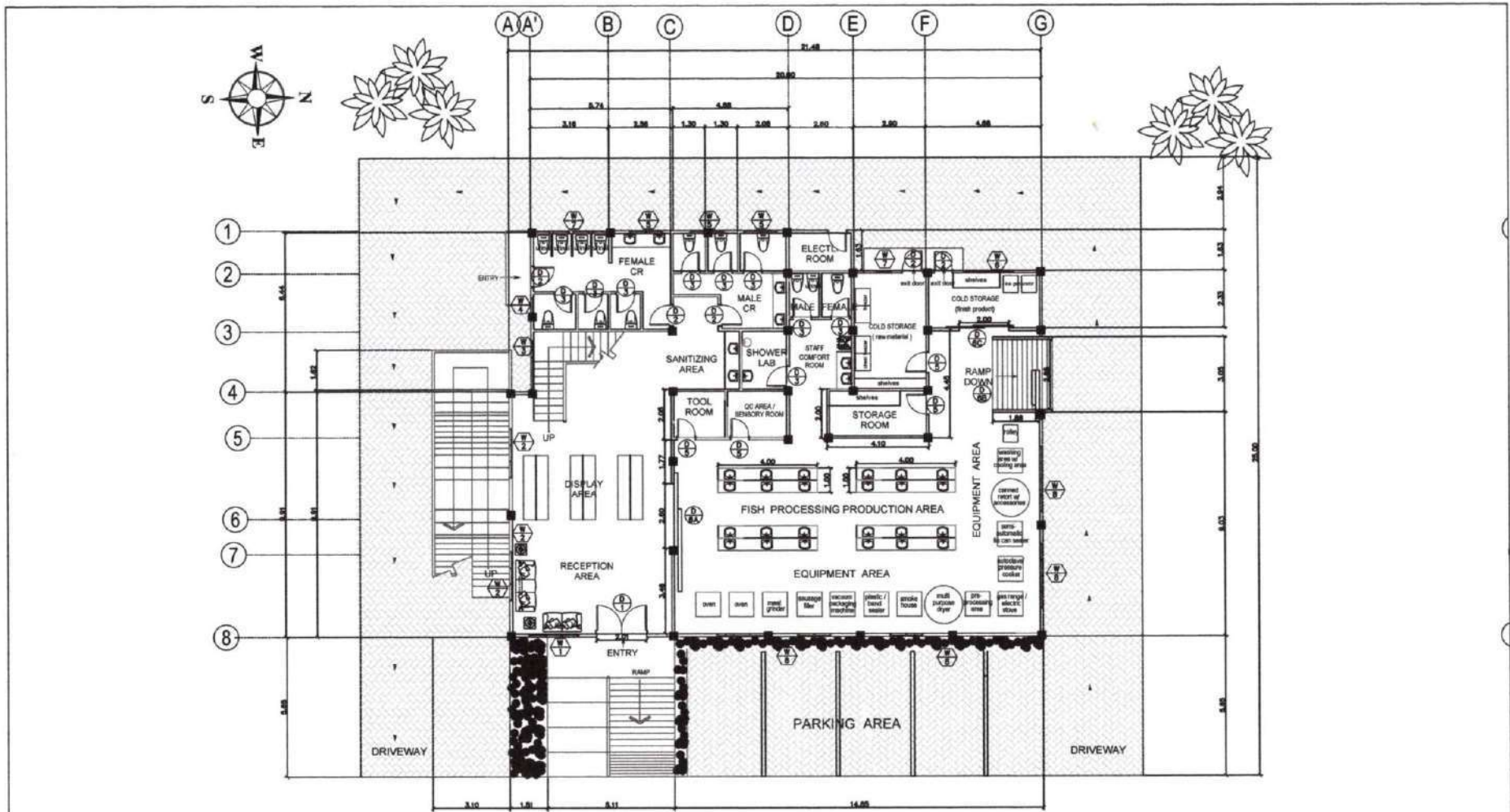


VICINITY MAP




LOCATION PLAN

OWNER:	PROJECT TITLE:	ARCHITECT:	NOTED BY:	RECOMMENDING APPROVAL:	APPROVED BY:	SHEET CONTENTS:	SHEET NO.:
	<b>CONSTRUCTION OF FISH PROCESSING PLANT FACILITY</b> SAN RAMON, BONTOC SOUTHERN LEYTE	<b>JOANNE F. MAGLINTE, uap</b> <small>PRIC No. PTR No. TIN No.</small>	<b>JINKY F. LUMBRE</b> <small>PRMO-DESIGNATE</small>	<b>GORDON B. OPINA</b> <small>HEAD, ADMINISTRATION</small>	<b>DEWOOWOODGEN P. BACLAYON, Ph.D</b> <small>CAMPUS DIRECTOR</small>	<b>PERSPECTIVE LOCATION PLAN VICINITY MAP</b>	

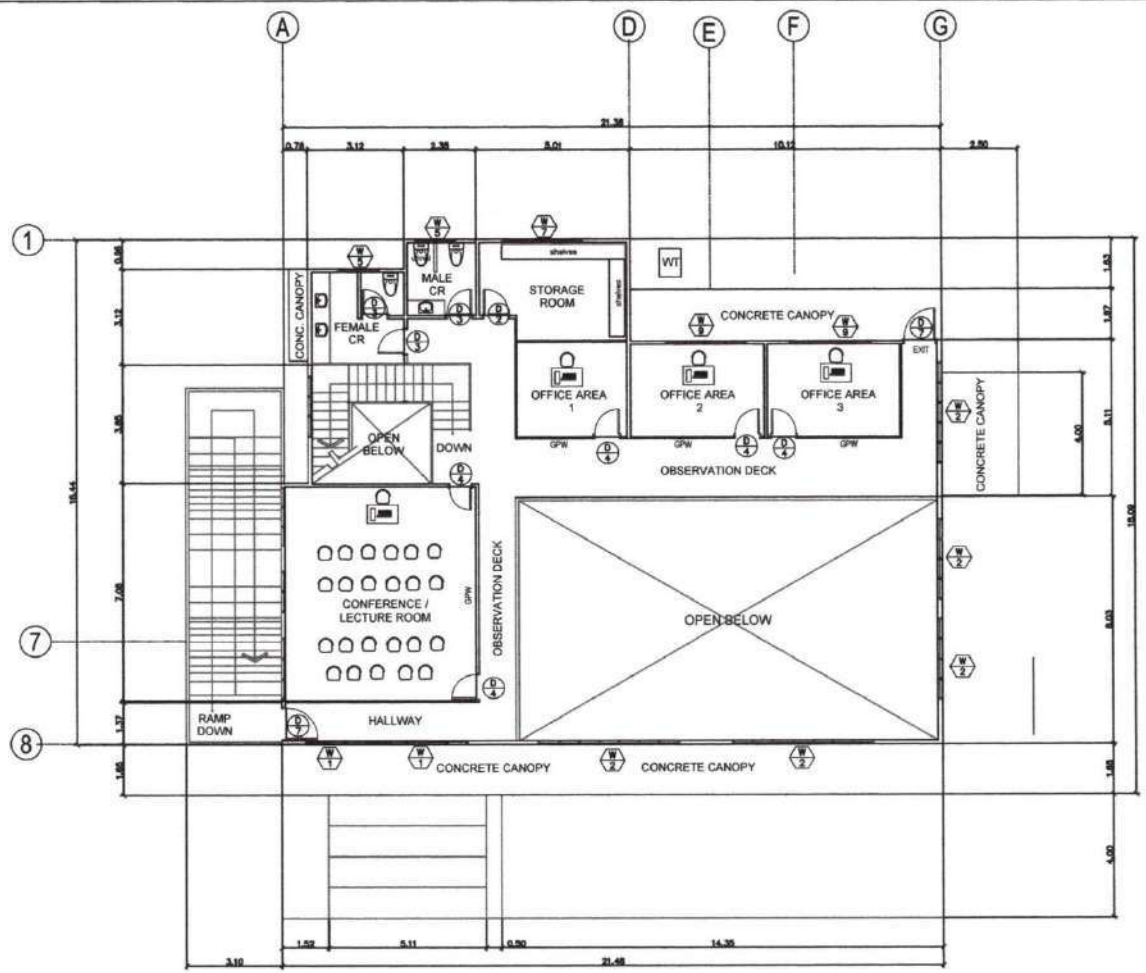


### GROUND FLOOR PLAN

SCALE 1:100 MTS.


OWNER	PROJECT TITLE	ARCHITECT	NOTED BY	RECOMMENDING APPROVAL	APPROVED BY	SHEET CONTENTS	SHEET NO.
 SOUTHERN DAVAO UNIVERSITY	<b>CONSTRUCTION OF FISH PROCESSING PLANT FACILITY</b> SAN RAMON, BONTOC SOUTHERN LEYTE	<b>JOANNE F. MAGLITE, uap</b> PRC No. _____ PTR No. _____ TRU No. _____	<b>JINKY F. LUMBRE</b> PPO/AS DESIGNATE	<b>GORDON B. OPINA</b> HEAD, ADMINISTRATION	<b>DEWOOWOOGEN P. BACLAYON, Ph.D</b> CAMPUS DIRECTOR	<b>GROUND FLOOR PLAN</b>	<b>A</b> <b>2/18</b>

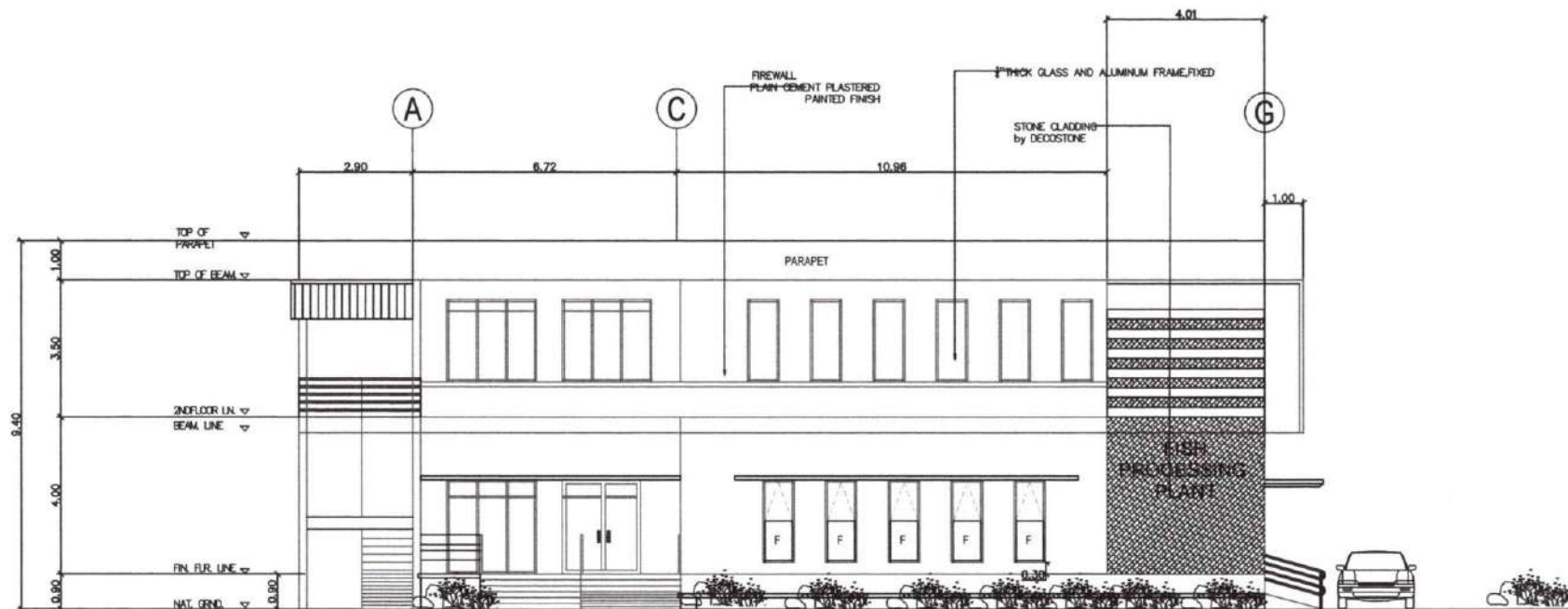




### SECOND FLOOR PLAN


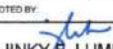

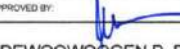
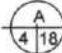
SCALE 1:100 MTS.

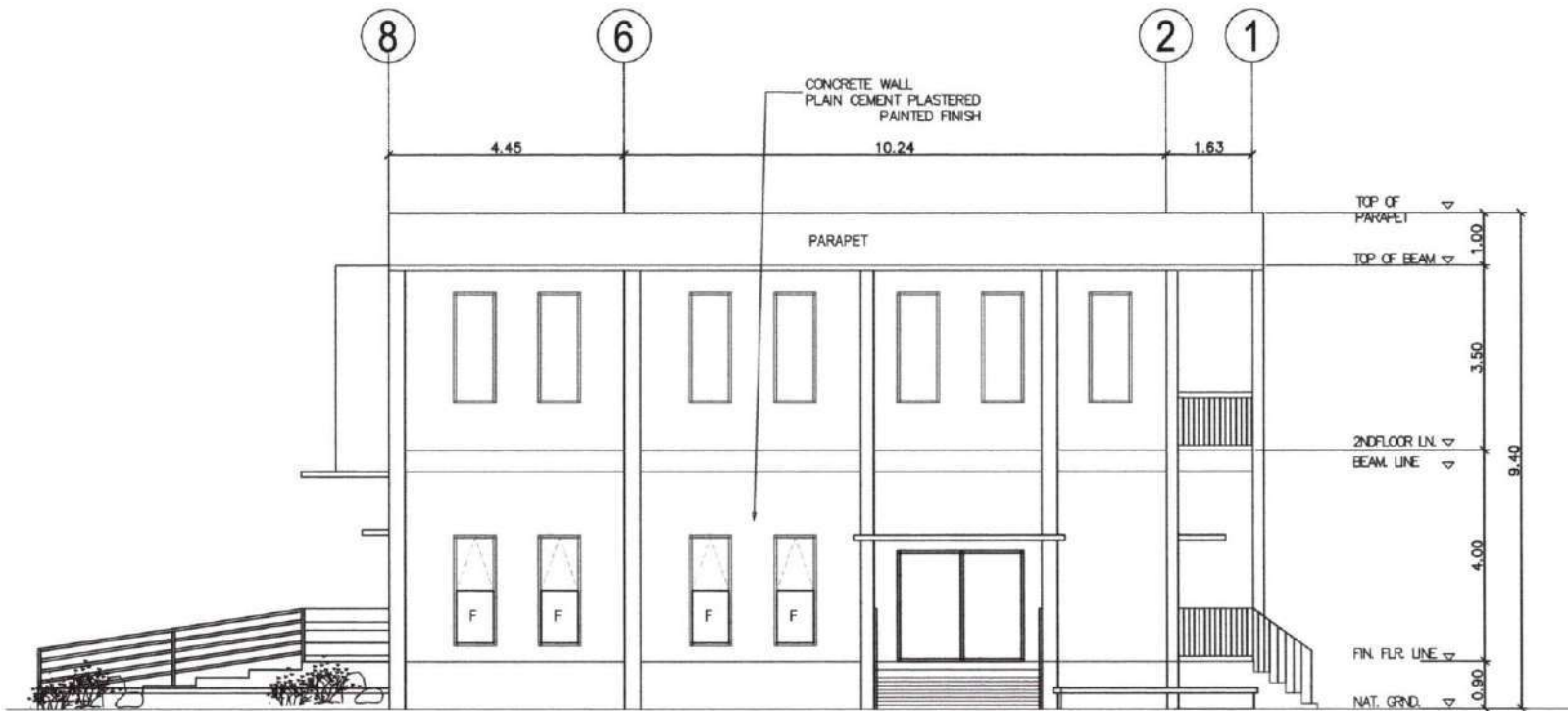
OWNER	PROJECT TITLE	ARCHITECT	NOTED BY	RECOMMENDING APPROVAL	APPROVED BY	SHEET CONTENTS	SHEET NO.
	<b>CONSTRUCTION OF FISH PROCESSING PLANT FACILITY</b> SAN RAMON, BONTOC, SOUTHERN LEYTE	<b>JOANNE F. MAGNITE, uap</b>	<b>JINKY F. LUMBRE</b> PROMO DESIGNATE	<b>GORDON B. OPINA</b> HEAD, ADMINISTRATION	<b>DEWOOWOGEN P. BACLAYON, Ph.D</b> CAMPUS DIRECTOR	<b>SECOND FLOOR PLAN</b>	<b>A 318</b>



# FRONT ELEVATION



SCALE 1:100 MTS.

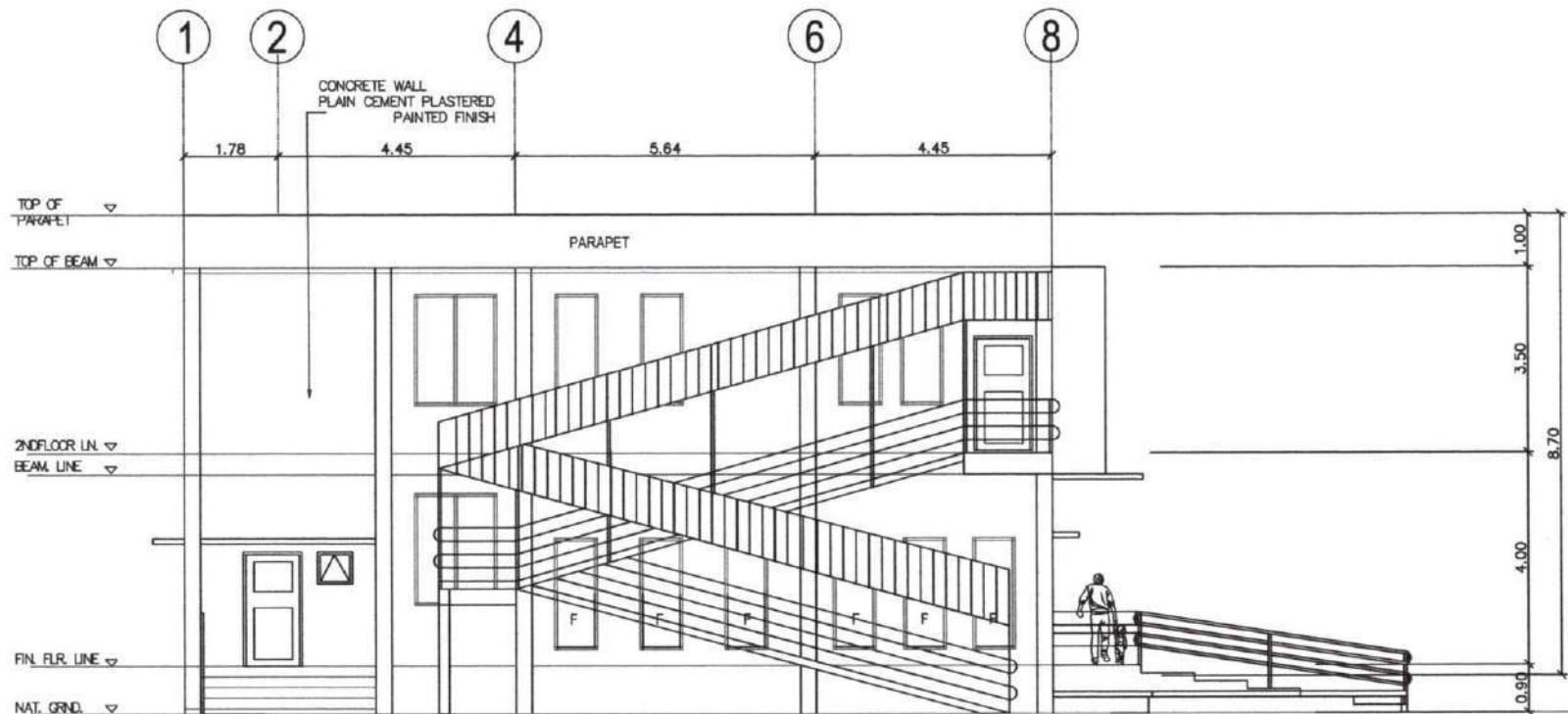
OWNER 	PROJECT TITLE <b>CONSTRUCTION OF FISH PROCESSING PLANT FACILITY</b> SAN RAMON, BONTOC, SOUTHERN LEYTE	ARCHITECT <b>JOANNE F. MAGLITE, uap</b> <small>PRG. No. PTR. No. TIN No.</small>	NOTED BY  <b>JINKY B. LUMBRE</b> <small>PROMO DESIGNATE</small>	RECOMMENDING APPROVAL  <b>GORDON B. OPINA</b> <small>HEAD, ADMINISTRATION</small>	APPROVED BY  <b>DEWOOWOOGEN P. BACLAYON, Ph.D</b> <small>CAMPUS DIRECTOR</small>	SHEET CONTENTS <b>FRONT ELEVATION</b>	SHEET NO. 
--	---	--	--	---	--	--	--



# RIGHT-SIDE ELEVATION

SCALE 1:100 MTS.


OWNER: 	PROJECT TITLE: <b>CONSTRUCTION OF FISH PROCESSING PLANT FACILITY</b> SAN RAMON, BORTOC SOUTHERN LEYTE	ARCHITECT: <i>[Signature]</i> <b>JOANNE F. MAGLINTE, uap</b>	NOTED BY: <i>[Signature]</i> <b>JINKY R. LUMBRE</b> PPDM DESIGNATE	RECOMMENDING APPROVAL: <i>[Signature]</i> <b>GORDON B. OPINA</b> HEAD ADMINISTRATION	APPROVED BY: <i>[Signature]</i> <b>DEWOOOUGEN P. BACLAYON, Ph.D</b> CAMPUS DIRECTOR	SHEET CONTENTS: <b>RIGHT SIDE ELEVATION</b>	SHEET NO.: 
---	---	--	---	---	--	--	---



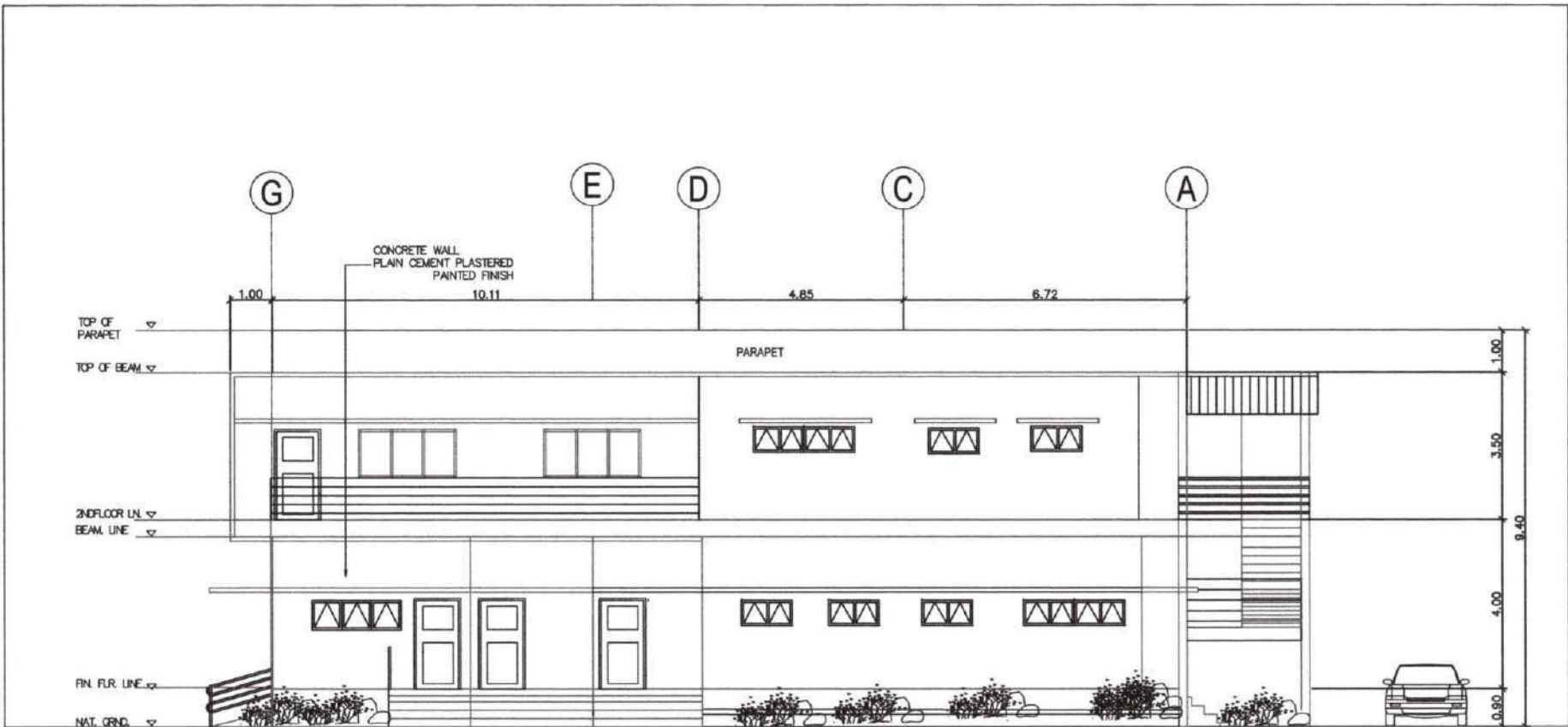
# LEFT-SIDE ELEVATION

SCALE

1:100 MTS.



<p>OWNER</p> 	<p>PROJECT TITLE</p> <p><b>CONSTRUCTION OF FISH PROCESSING PLANT FACILITY</b> SAN RAMON, BONTOC SOUTHERN LEYTE</p>	<p>ARCHITECT</p> <p><i>JFM</i> <b>JOANNE F. MAGLINTE, uap</b></p> <p>PRC No. PTR No. TR No.</p>	<p>NOTED BY</p> <p><i>JL</i> <b>JINKY F. LUMBRE</b> PPCMO-DESIGNATE</p>	<p>RECOMMENDING APPROVAL</p> <p><i>GO</i> <b>GORDON B. OPINA</b> HEAD, ADMINISTRATION</p>	<p>APPROVED BY</p> <p><i>DB</i> <b>DEWOOWOODGEN P. BACLAYON, Ph.D</b> CAMPUS DIRECTOR</p>	<p>SHEET CONTENTS</p> <p><b>LEFT SIDE ELEVATION</b></p>	<p>SHEET NO.</p> <p><b>A</b> <b>6</b> <b>18</b></p>
--	--	---	---	---	---	---	---

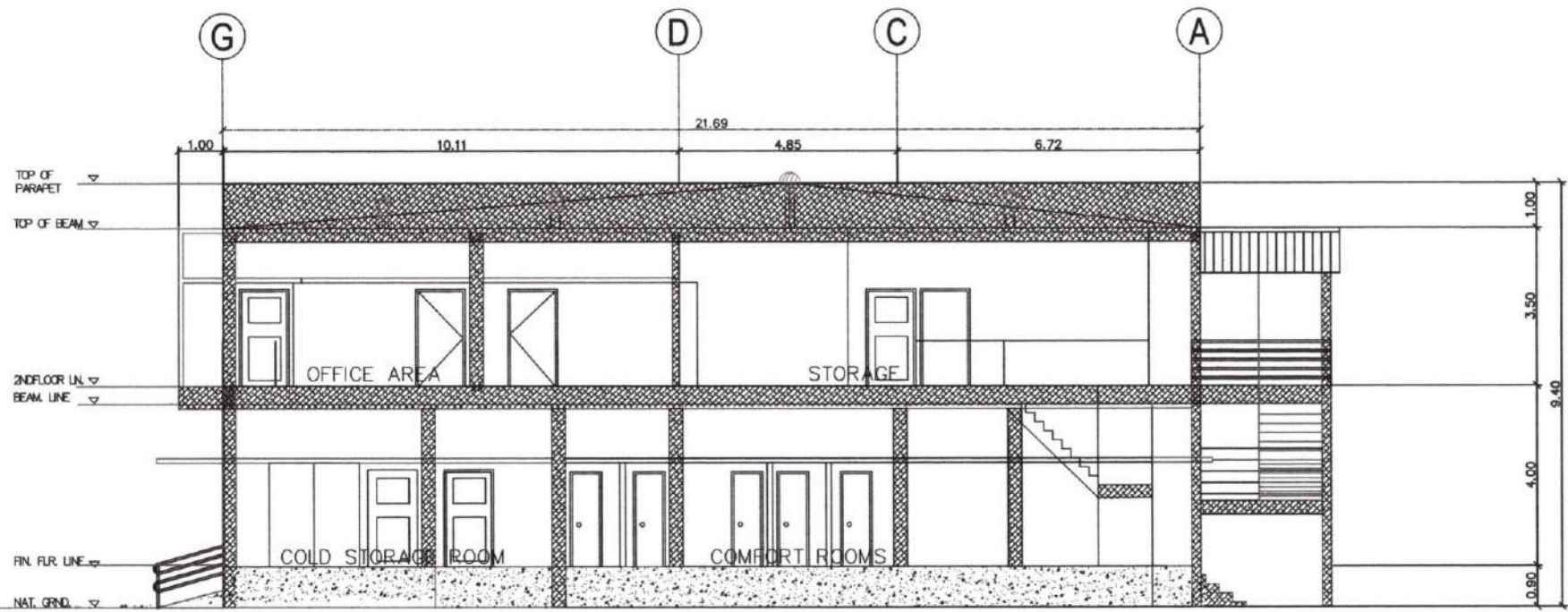




# REAR ELEVATION



SCALE 1:100 MTS.

OWNER:	PROJECT TITLE:	ARCHITECT:	NOTED BY:	RECOMMENDING APPROVAL:	APPROVED BY:	SHEET CONTENTS:	SHEET NO.:
	<b>CONSTRUCTION OF FISH PROCESSING PLANT FACILITY</b> SAN RAMON, BONTOC SOUTHERN LEYTE	<b>JOANNE F. MAGNITE, uap</b>	<b>JINKY F. LUMBRE</b> PROMO-DESIGNATE	<b>GORDON B. OPINA</b> HEAD, ADMINISTRATION	<b>DEWOOWO GEN P. BACLAYON, Ph.D</b> CAMPUS DIRECTOR	<b>REAR ELEVATION</b>	



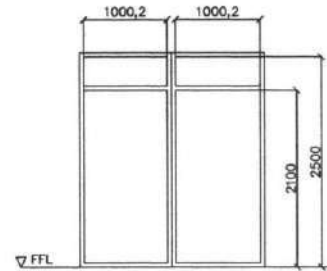
# SECTION THRU "G-A"

SCALE 1:100 MTS.

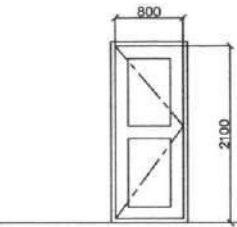
OWNER 	PROJECT TITLE <b>CONSTRUCTION OF FISH PROCESSING PLANT FACILITY</b> SAN RAMON, BONTOC SOUTHERN LEYTE	ARCHITECT <i>[Signature]</i> <b>JOANNE F. MAGLINTE, uap</b> <small>PREC. No. PTR No. TIN No.</small>	NOTED BY <i>[Signature]</i> <b>JINKY F. LUMBRE</b> <small>PPOR/D EIGNATE</small>	RECOMMENDING APPROVAL <i>[Signature]</i> <b>GORDON B. OPINA</b> <small>HEAD, ADMINISTRATION</small>	APPROVED BY <i>[Signature]</i> <b>DEWOOOUGEN P. BACLAYON, Ph.D</b> <small>CAMPUS DIRECTOR</small>	SHEET CONTENTS <b>SECTION</b>	SHEET NO. 
--	--	---	---	--	--	----------------------------------	--

# SCHEDULE OF DOORS

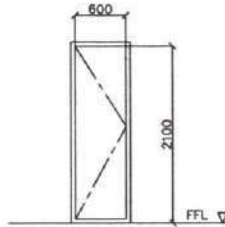
SCALE 1:40 METERS



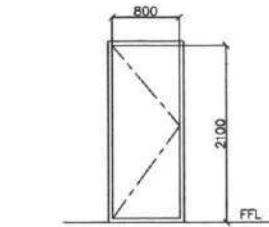
**D1** 1/2" THICK SWING, GLASS ANALOK ALUMINUM FRAME WITH STAINLESS DOOR LOCK HANDLE AND WEATHER STRIPS WITH PLAIN GLASS HEADER  
LOCATION: MAIN ENTRANCE



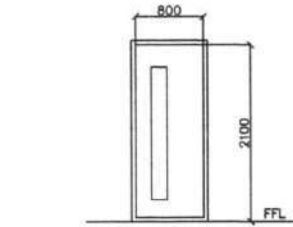
**D2** WOODEN MOULDED DOOR WITH 2X8 WOODEN DOOR JAMB DOOR LOCK : LEVER TYPE, SATIN FINISH  
LOCATION: MAIN DOOR MAKE 5 SETS



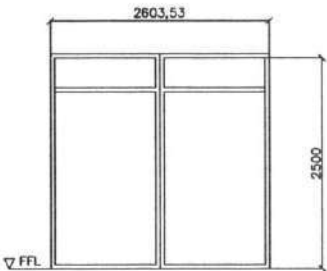
**D3** PVC DOOR AND JAMB DOOR LOCK: SATIN FINISH LEVER TYPE  
LOCATION: T&B 12 SETS



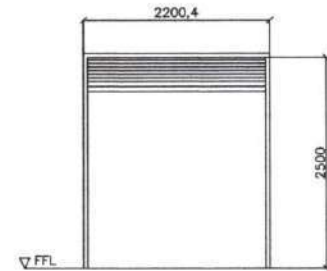
**D4** 1/2" THICK SWING, GLASS ANALOK ALUMINUM FRAME WITH STAINLESS DOOR LOCK HANDLE AND WEATHER STRIPS  
LOCATION: OFFICE AREA 5 SETS



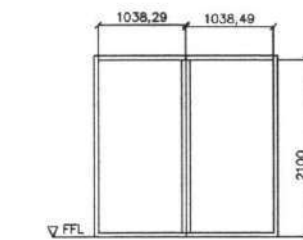
**D5** 2" x 6" HARDWOOD DOOR AND JAMB WITH 1/2" THICK PLAIN SHOW GLASS, SWING WITH LEVER-TYPE DOOR LOCKSET  
LOCATION: TOOL ROOM, SENSORY, COLD STORAGE 4 SETS



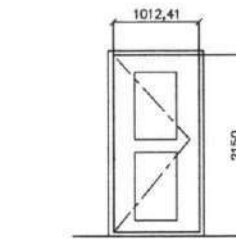
**D6A** 1/2" THICK SLIDING, GLASS ANALOK ALUMINUM FRAME WITH STAINLESS DOOR LOCK HANDLE AND WEATHER STRIPS WITH PLAIN GLASS HEADER  
LOCATION: MAIN DOOR, PROCESSING AREA 1 SET DOUBLE LEAF



**D6B** HEAVY DUTY ROLL UP DOOR WITH 2"X2" SUPPORT ANGLE BARS WITH SIDE AND BOTTOM RAILS  
LOCATION: EXIT DOOR DISPATCHING AREA 1 SET



**D6C** 1/2" THICK SLIDING, GLASS ANALOK ALUMINUM FRAME WITH STAINLESS DOOR LOCK HANDLE AND WEATHER STRIPS WITH PLAIN GLASS HEADER  
LOCATION: MAIN DOOR, PROCESSING AREA 1 SET DOUBLE LEAF

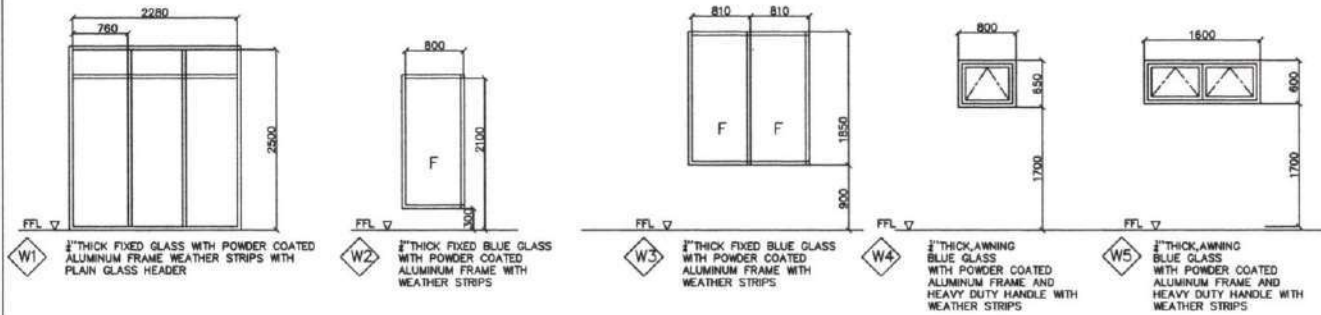


**D7** HARD WOOD DOOR WITH 2X8 WOODEN DOOR JAMB DOOR LOCK : LEVER TYPE, SATIN FINISH  
LOCATION: EXIT DOOR 2 SETS

OWNER	PROJECT TITLE	ARCHITECT	NOTED BY	RECOMMENDING APPROVAL	APPROVED BY	SHEET CONTENTS	SHEET NO
	CONSTRUCTION OF FISH PROCESSING PLANT FACILITY SAN RAMON, BONTOC SOUTHERN LEYTE	JOANNE F. MAGLINTÉ, uap PRC No. _____ DTI No. _____ TIN No. _____	JINKY F. LUMBRE PRC No. _____	GORDON B. OPINA HEAD, ADMINISTRATION	DEWOOWOOGEN P. BACLAYON, Ph.D. CAMPUS DIRECTOR	DOOR SCHEDULE	A 9/18

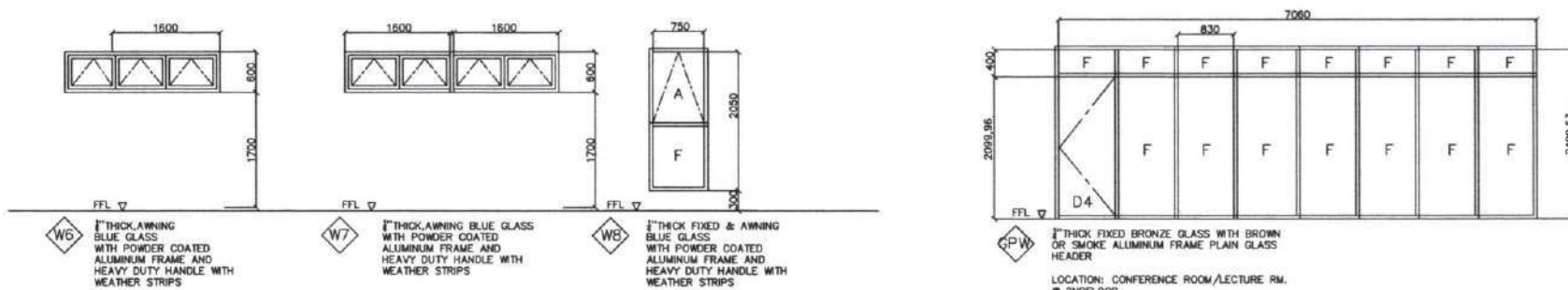
# SCHEDULE OF WINDOWS

SCALE 1:40 METERS



**W1** 1/2" THICK FIXED GLASS WITH POWDER COATED ALUMINUM FRAME WEATHER STRIPS WITH PLAIN GLASS HEADER  
**W2** 1/2" THICK FIXED BLUE GLASS WITH POWDER COATED ALUMINUM FRAME WITH WEATHER STRIPS  
**W3** 1/2" THICK FIXED BLUE GLASS WITH POWDER COATED ALUMINUM FRAME WITH WEATHER STRIPS  
**W4** 1/2" THICK AWNING BLUE GLASS WITH POWDER COATED ALUMINUM FRAME AND HEAVY DUTY HANDLE WITH WEATHER STRIPS  
**W5** 1/2" THICK AWNING BLUE GLASS WITH POWDER COATED ALUMINUM FRAME AND HEAVY DUTY HANDLE WITH WEATHER STRIPS

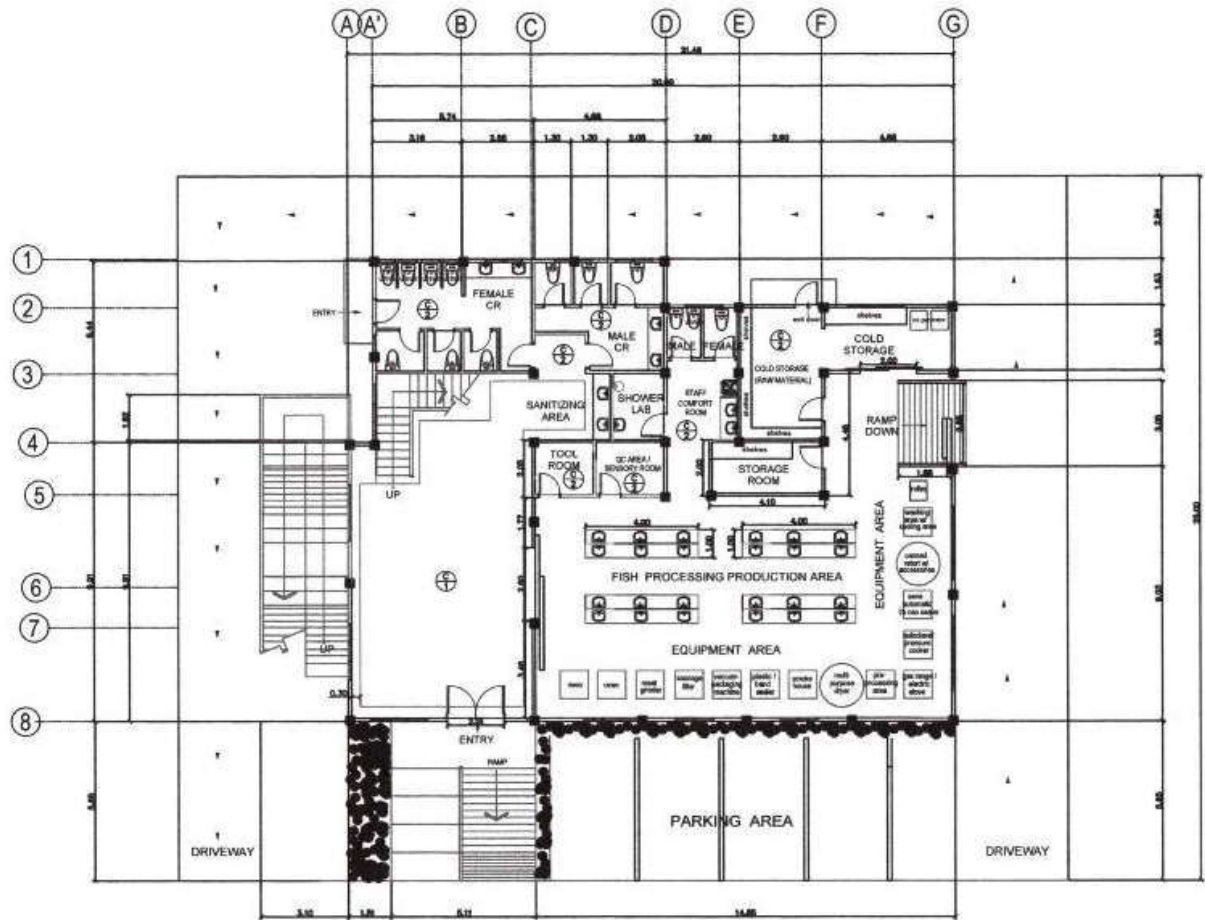
# SCHEDULE OF GLASS PARTITION WALL



**WG** 1/2" THICK AWNING BLUE GLASS WITH POWDER COATED ALUMINUM FRAME AND HEAVY DUTY HANDLE WITH WEATHER STRIPS  
**W7** 1/2" THICK AWNING BLUE GLASS WITH POWDER COATED ALUMINUM FRAME AND HEAVY DUTY HANDLE WITH WEATHER STRIPS  
**W8** 1/2" THICK FIXED & AWNING BLUE GLASS WITH POWDER COATED ALUMINUM FRAME AND HEAVY DUTY HANDLE WITH WEATHER STRIPS  
**GPW** 1/2" THICK FIXED BRONZE GLASS WITH BROWN OR SMOKE ALUMINUM FRAME PLAIN GLASS HEADER  
 LOCATION: CONFERENCE ROOM/LECTURE RM.  
 @ 2ND FLOOR

OWNER:	PROJECT TITLE:	ARCHITECT:	NOTED BY:	RECOMMENDING APPROVAL:	APPROVED BY:	SHEET CONTENTS:	SHEET NO.:
	CONSTRUCTION OF FISH PROCESSING PLANT FACILITY SAN RAMON, SOUTHERN LEYTE	JOANNE F. MASLITE, uap	JINKY F. LUMBRE PRON. DESIGNATE	GORDON B. OPINA HEAD, ADMINISTRATION	DEWOOWOOD GEN P. BACLAYON, Ph.D. CAMPUS DIRECTOR	WINDOWS SCHEDULE	A 1018







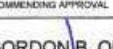
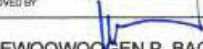
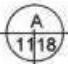
**LEGEND:**

C1- 12MM GYPSUM BOARD ON METAL FURRING SUPPORT SYSTEM, PAINTED

C2- PAINTED, CONCRETE SLAB

**GROUND FLOOR CEILING PLAN LAYOUT**

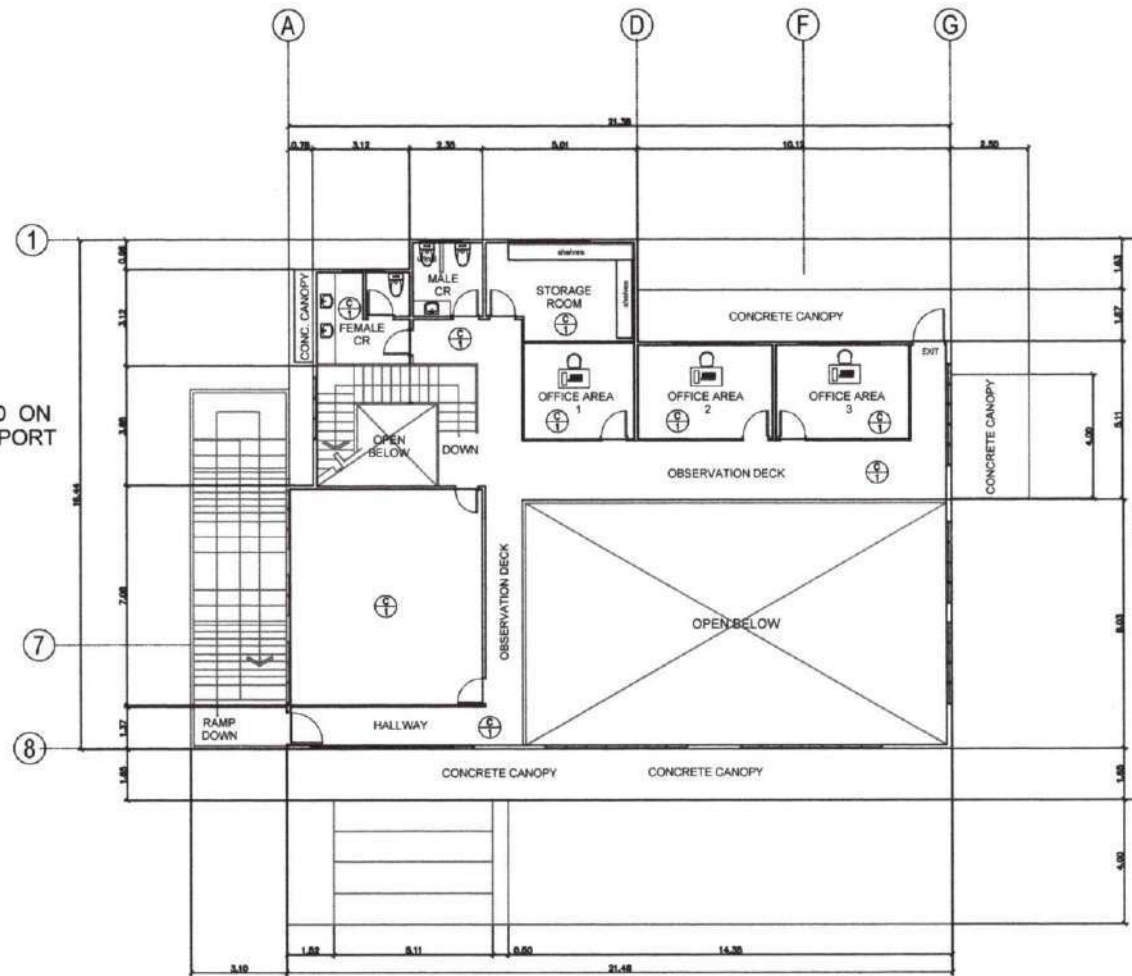
SCALE 1:100 MTS.

OWNER: 	PROJECT TITLE: <b>CONSTRUCTION OF FISH PROCESSING PLANT FACILITY</b> SAN RAMON, BONTOC SOUTHERN LEYTE	ARCHITECT: JOANNE F. MAGLINTÉ, uap PIC NO. _____ PTR No. _____ TRN No. _____	NOTED BY:  <b>JINKY B. LUMBRE</b> PPOCS DESIGNATE	RECOMMENDING APPROVAL:  <b>GORDON B. OPINA</b> HEAD, ADMINISTRATION	APPROVED BY:  <b>DEWOOWOOWESEN P. BACLAYON, Ph.D</b> CAMPUS DIRECTOR	SHEET CONTENTS: <b>GROUND FLOOR CEILING PLAN</b>	SHEET NO. 
---	---	--	---	---	--	---	--

**LEGEND:**


C1- 12MM GYPSUM BOARD ON METAL FURRING SUPPORT SYSTEM, PAINTED

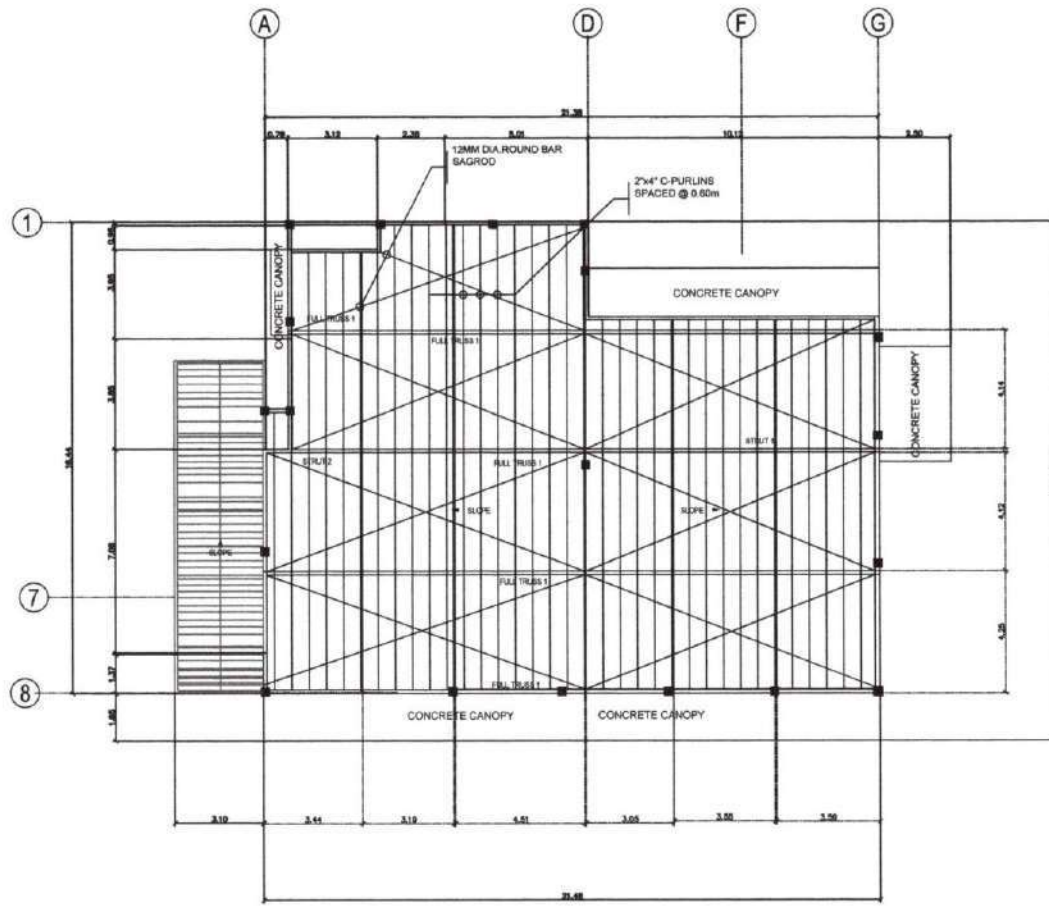
C2- PAINTED CONCRETE SLAB



**SECOND FLOOR CEILING PLAN LAYOUT**

SCALE 1:100 MTS.

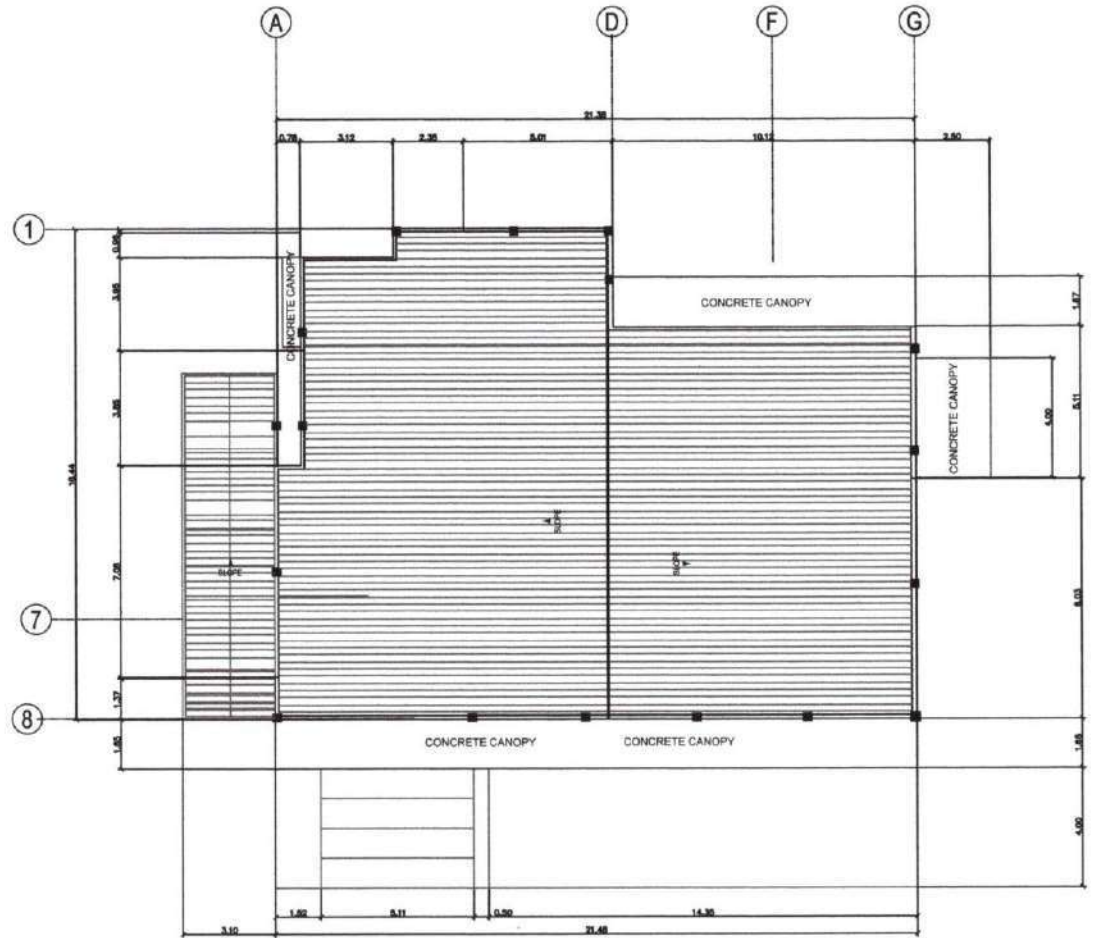
OWNER	PROJECT TITLE	ARCHITECT	NOTED BY	RECOMMENDING APPROVAL	APPROVED BY	SHEET CONTENTS	SHEET NO.
	<p><b>CONSTRUCTION OF FISH PROCESSING PLANT FACILITY</b> SAN RAMON, BONTOC, SOUTHERN LEYTE</p>	<p><b>JOANNE F. MAGUINTE, uap</b> PRC No. PTR No. TIN No.</p>	<p><b>JINKY F. LUMBRE</b> PPDMO-DESIGNATE</p>	<p><b>GORDON B. OPINA</b> HEAD, ADMINISTRATION</p>	<p><b>DEWOOWOOGEN P. BACLAYON, Ph.D</b> CAMPUS DIRECTOR</p>	<p>2F CEILING PLAN</p>	<p>A 1218</p>



### ROOF FRAMING PLAN



SCALE 1:100 MTS.

OWNER	PROJECT TITLE	ARCHITECT	NOTED BY	RECOMMENDING APPROVAL	APPROVED BY	SHEET CONTENTS	SHEET NO.
	<b>CONSTRUCTION OF FISH PROCESSING PLANT FACILITY</b> SAN RAMON, BONTOC SOUTHERN LEYTE	<b>JOANNE F. MAGLINTE, uap</b> <small>PRIC No. PTF No. TIN No.</small>	<b>JINKY F. LUMBRE</b> <small>PP/COM-DESIGNATE</small>	<b>GORDON B. OPINA</b> <small>HEAD, ADMINISTRATION</small>	<b>DEWOOWOGEN P. BACLAYON, Ph.D</b> <small>CAMPUS DIRECTOR</small>	<b>ROOF FRAMING PLAN</b>	

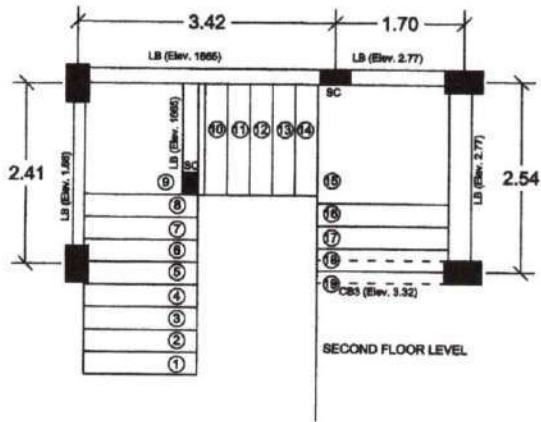


### ROOF PLAN

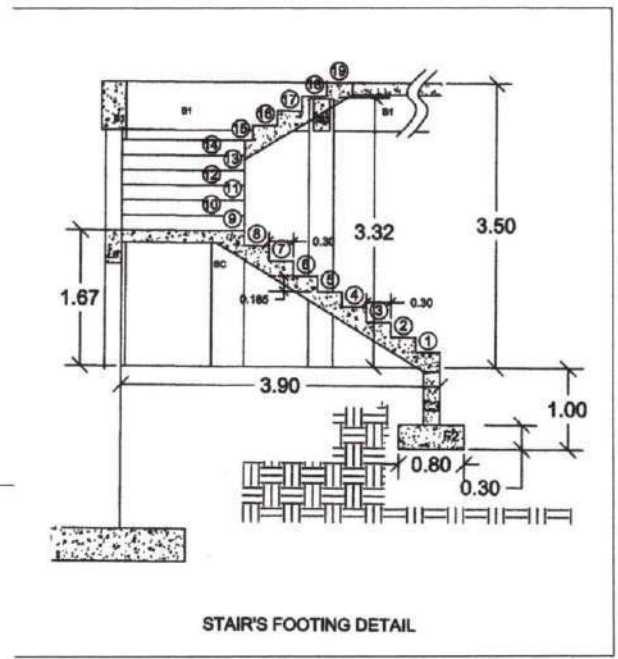
SCALE 1:100 MTS.

 <p><b>BONTOC CAMPUS</b></p>	<p><b>PROJECT TITLE</b>  <b>CONSTRUCTION OF FISH PROCESSING PLANT FACILITY</b>          SAN RAMON, BONTOC SOUTHERN LEYTE</p>	<p><b>ARCHITECT</b>  <b>JOANNE F. MAGLINTE, uap</b></p>	<p><b>NOTED BY</b>  <i>JFL</i>  <b>JINKY F. LUMBRE</b>          PPOMO DESIGNATE</p>	<p><b>RECOMMENDING APPROVAL</b>  <b>GORDON B. OPINA</b>          HEAD, ADMINISTRATION</p>	<p><b>APPROVED BY</b>  <i>[Signature]</i>  <b>DEWOOWOOGEN P. BACLAYON, Ph.D</b>          CAMPUS DIRECTOR</p>	<p><b>SHEET CONTENTS</b>  <b>ROOF PLAN</b></p>	<p><b>SHEET NO.</b>  </p>
---	--	---	---	---	--	--	--

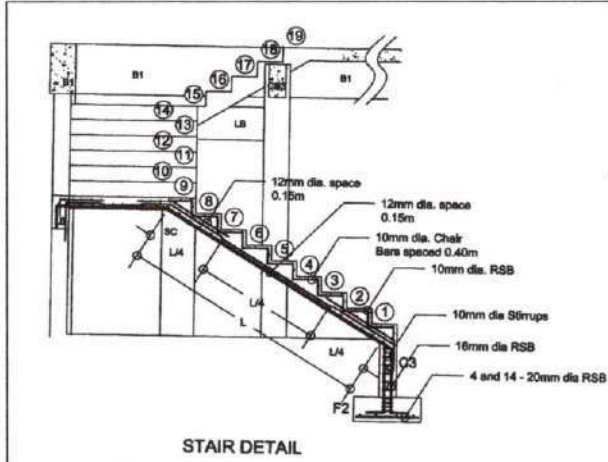





STAIR'S LB AND SC PLAN

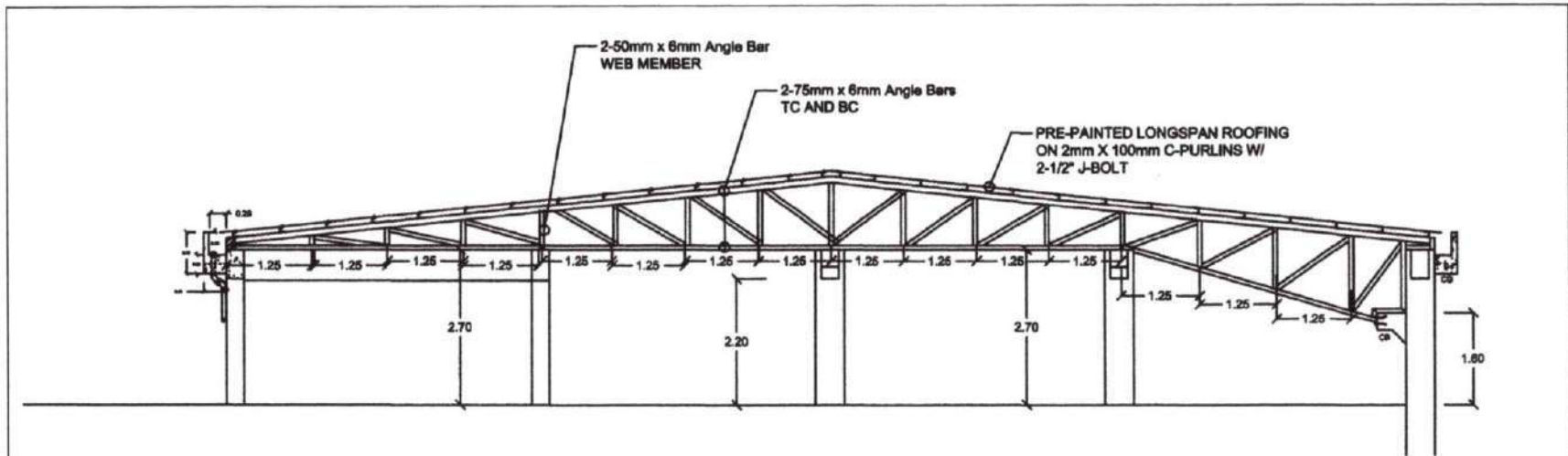


STAIR'S FOOTING DETAIL

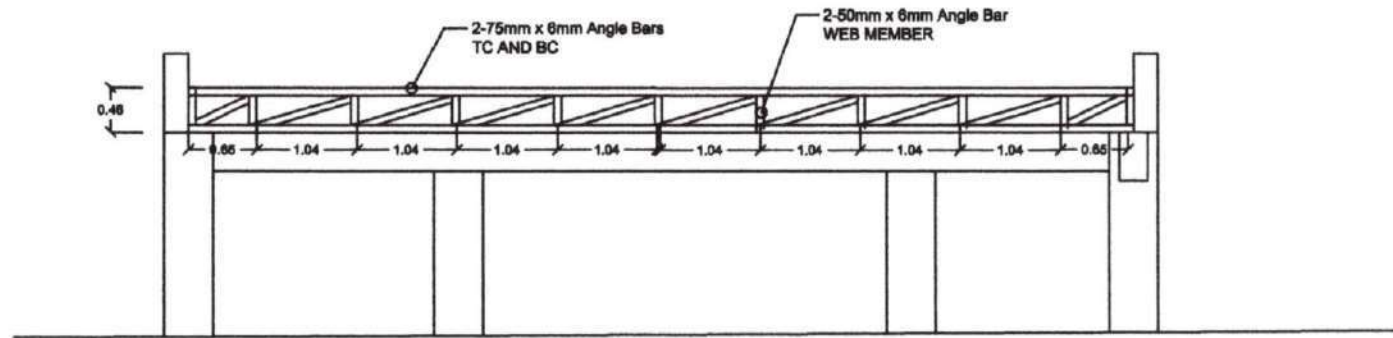


STAIR DETAIL

OWNER	PROJECT TITLE	ARCHITECT	NOTED BY	RECOMMENDING APPROVAL	APPROVED BY	SHEET CONTENTS	SHEET NO.
	CONSTRUCTION OF FISH PROCESSING PLANT FACILITY SAN RAMON BONTOC SOUTHERN LEYTE	JOANNE F. MAGLINTE, uap	JINKY F. LUMBRE PPDM DESIGNATE	GORDON B. OPINA HEAD, ADMINISTRATION	DEWOOWOOGEN P. BACLAYON, Ph.D CAMPUS DIRECTOR	STAIR DETAIL	A 15/18



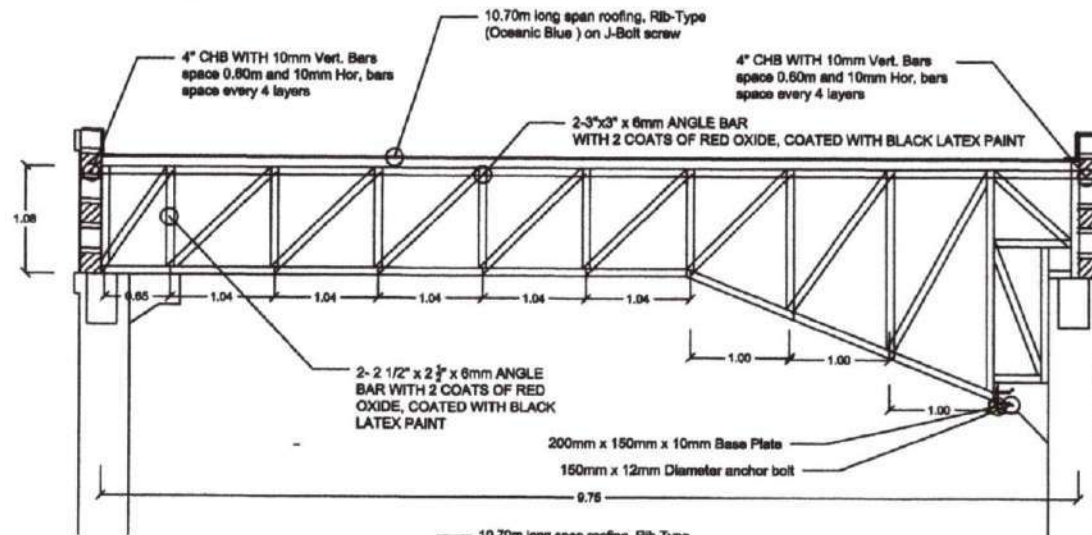
**FULL TRUSS 1 DETAILED PLAN**



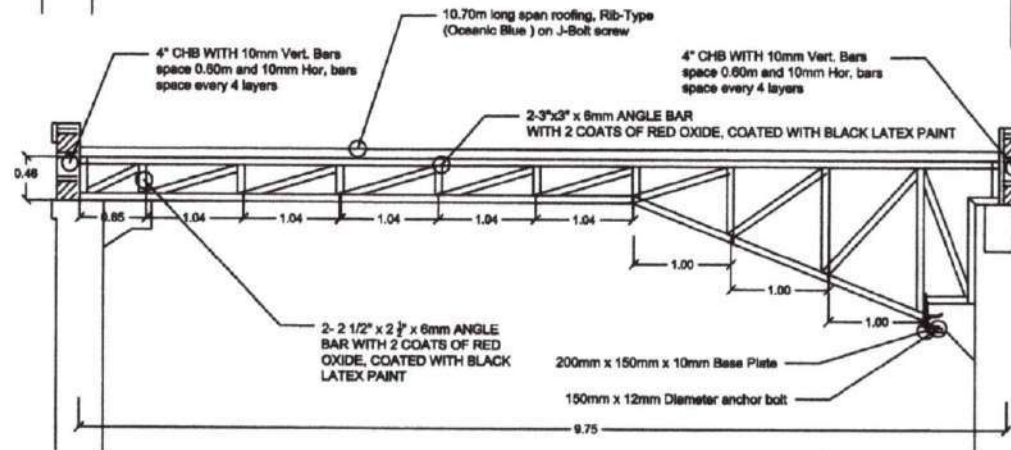
**STRUT 3**



OWNER	PROJECT TITLE	ARCHITECT	NOTED BY	RECOMMENDING APPROVAL	APPROVED BY	SHEET CONTENTS	SHEET NO.
	CONSTRUCTION OF FISH PROCESSING PLANT FACILITY SAN RAMON, BONTOC SOUTHERN LEYTE	JOANNE F. MAGLANTE, uap PRC No. DTR No. TIN No.	JINKY P. LUMBRE PPCNO DESIGNATE	GORDON B. OPINA HEAD ADMINISTRATION	DEWOOWOGEN P. BACLAYON, Ph.D CAMPUS DIRECTOR	TRUSS DETAIL	A 16/18

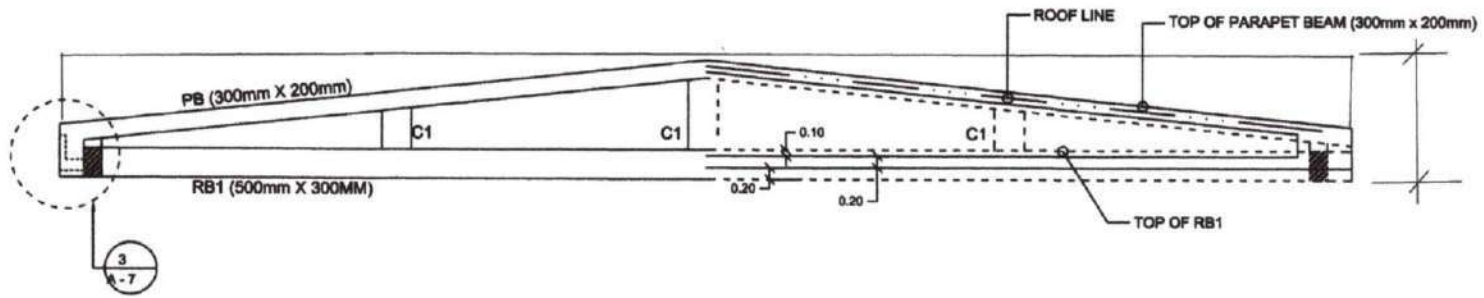
# STRUT 1



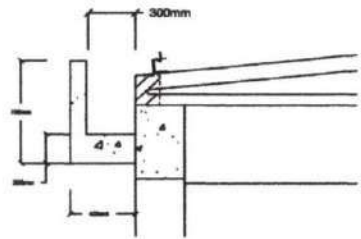
# STRUT 2



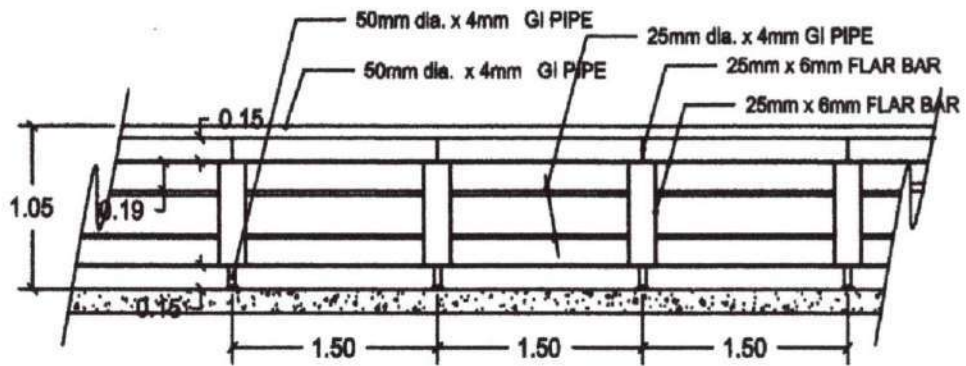
OWNER: 	PROJECT TITLE: CONSTRUCTION OF FISH PROCESSING PLANT FACILITY SAN RAMON, BONTOC SOUTHERN LEYTE	ARCHITECT: JOANNE F. MAGLINTE, uap	NOTED BY:  JINKY F. LUMBRE PPMO DESIGNATE	RECOMMENDING APPROVAL: GORDON B. OPINA HEAD, ADMINISTRATION	APPROVED BY:  DEWOOWOOGEN P. BACLAYON, Ph.D CAMPUS DIRECTOR	SHEET CONTENTS: STRUT DETAIL	SHEET NO.: A 17/18
---	--	---------------------------------------	---	---	---	------------------------------------	--------------------------





**PARAPET PLAN**



**GUTTER DETAIL**  
SCALE: NTS



**OBSERVATION DECK RAILINGS DETAIL**  
SCALE: NTS

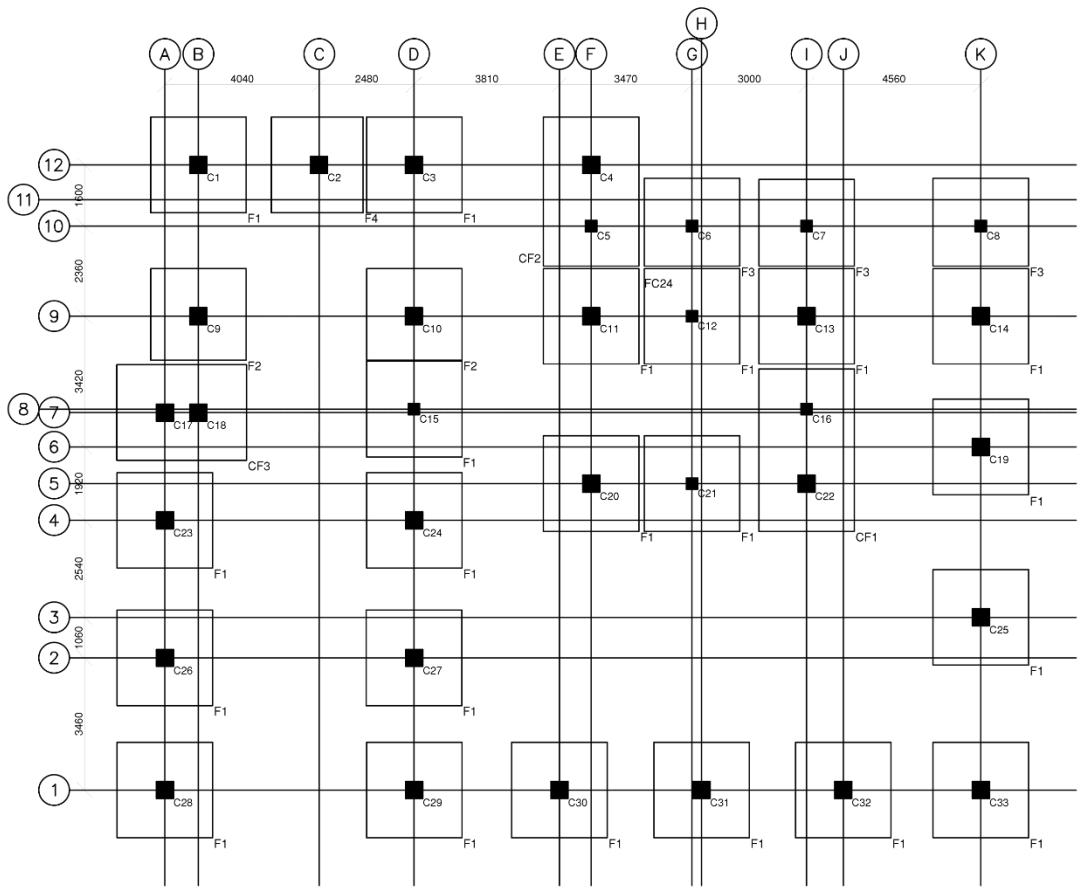
	<b>PROJECT TITLE</b> CONSTRUCTION OF FISH PROCESSING PLANT FACILITY SAN RAMON, BORTOG, SOUTHERN LEYTE	<b>ARCHITECT</b> JOANNE R. MAGLINTE, uap <small>PRC No. PTR No. TIN No.</small>	<b>NOTED BY:</b> JINKY B. LUMBRE <small>PPCOM DESIGNATE</small>	<b>RECOMMENDING APPROVAL</b> GORDON B. OPINA <small>HEAD, ADMINISTRATION</small>	<b>APPROVED BY:</b> DEWOOWOOGEN P. BACLAYON, Ph.D <small>CAMPUS DIRECTOR</small>	<b>SHEET CONTENTS</b> STRUT DETAIL	<b>SHEET NO.</b> 
---	---	---	---	--	--	---------------------------------------	---



---

# **STRUCTURAL PLANS**


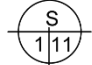
---

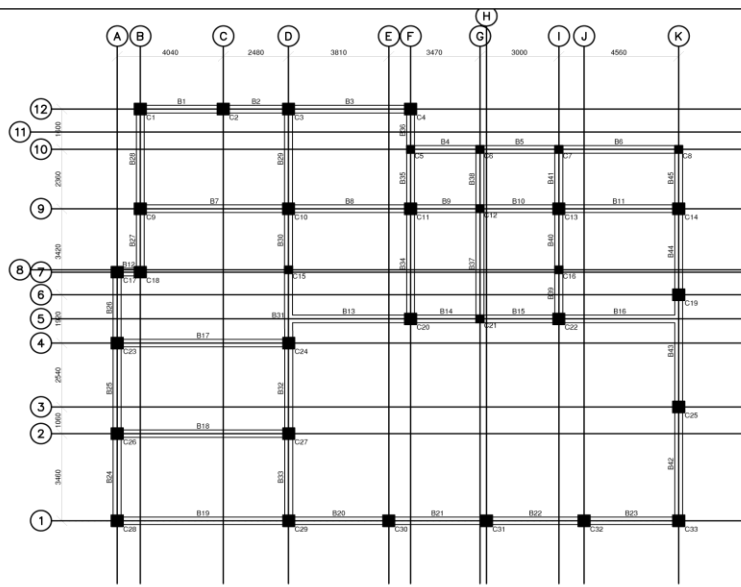


FOUNDATION PLAN

FOOTING SCHEDULE (C20:Fy414)

FOOTING NUMBERS	COLUMN NUMBERS	FOOTING TYPE	FOOTING DIMENSION			FOOTING REINFORCEMENT	
			L	B	D1	BOTTOM	
						ALONG B	ALONG L
F1	C1	Pad	2500	2500	500	#20@300 C/C	#20@300 C/C
F1	C3	Pad	2500	2500	500	#20@300 C/C	#20@300 C/C
F1	C11	Pad	2500	2500	500	#20@300 C/C	#20@300 C/C
F1	C12	Pad	2500	2500	500	#20@300 C/C	#20@300 C/C
F1	C13	Pad	2500	2500	500	#20@300 C/C	#20@300 C/C
F1	C14	Pad	2500	2500	500	#20@300 C/C	#20@300 C/C
F1	C15	Pad	2500	2500	500	#20@300 C/C	#20@300 C/C
F1	C19	Pad	2500	2500	500	#20@300 C/C	#20@300 C/C
F1	C20	Pad	2500	2500	500	#20@300 C/C	#20@300 C/C
F1	C21	Pad	2500	2500	500	#20@300 C/C	#20@300 C/C
F1	C23	Pad	2500	2500	500	#20@300 C/C	#20@300 C/C
F1	C24	Pad	2500	2500	500	#20@300 C/C	#20@300 C/C
F1	C25	Pad	2500	2500	500	#20@300 C/C	#20@300 C/C
F1	C26	Pad	2500	2500	500	#20@300 C/C	#20@300 C/C
F1	C27	Pad	2500	2500	500	#20@300 C/C	#20@300 C/C
F1	C28	Pad	2500	2500	500	#20@300 C/C	#20@300 C/C
F1	C29	Pad	2500	2500	500	#20@300 C/C	#20@300 C/C
F1	C30	Pad	2500	2500	500	#20@300 C/C	#20@300 C/C
F1	C31	Pad	2500	2500	500	#20@300 C/C	#20@300 C/C
F1	C32	Pad	2500	2500	500	#20@300 C/C	#20@300 C/C
F1	C33	Pad	2500	2500	500	#20@300 C/C	#20@300 C/C
F2	C9	Pad	2500	2400	500	#20@300 C/C	#20@300 C/C
F3	C10	Pad	2500	2400	500	#20@300 C/C	#20@300 C/C
F3	C31	Pad	2300	2500	500	#20@300 C/C	#20@300 C/C
F3	C32	Pad	2300	2500	500	#20@300 C/C	#20@300 C/C
F4	C2	Pad	2400	2500	500	#20@300 C/C	#20@300 C/C
CF1	C16 & C22	Pad	4250	2500	500	#20@300 C/C	#20@300 C/C
CF2	C4 & C5	Pad	3900	2500	500	#20@300 C/C	#20@300 C/C
CF3	C17 & C18	Pad	2500	3400	500	#20@300 C/C	#20@300 C/C


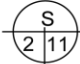
OWNER:  BONTOC CAMPUS	PROJECT TITLE: <b>CONSTRUCTION OF FISH PROCESSING PLANT FACILITY</b> SAN RAMON, BONTOC SOUTHERN LEYTE	CIVIL ENGINEER: <b>JOMMAR V. TAGALOG</b> PRC No. _____ PTR No. _____ TIN No. _____	NOTED BY: <b>JINKY F. LUMBRE</b> PPDMO-DESIGNATE	RECOMMENDED BY: <b>GORDON B. OPINA</b> HEAD, ADMINISTRATION	APPROVED BY: <b>DEWOOWOGEN P. BACLAYON, Ph.D</b> CAMPUS DIRECTOR	SHEET CONTENTS: <b>FOUNDATION PLAN</b>	SHEET NO.: 
---	---	--	--	---	--	---	---

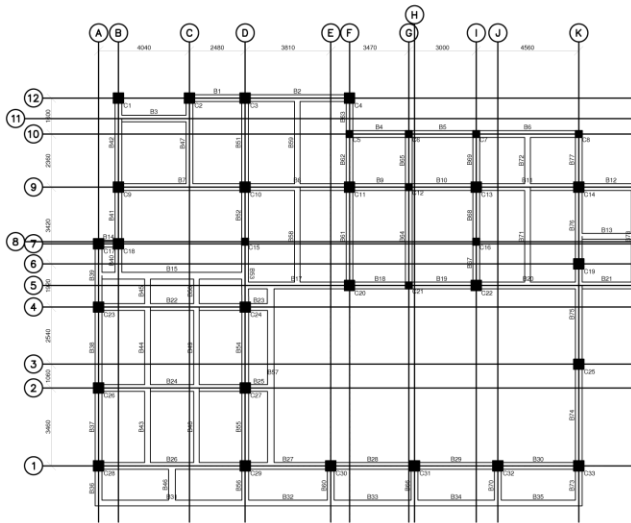


TIE BEAM LAYOUT @NGL

BEAM SCHEDULE (C20:Fy414) (LEVEL: 2.5m)

BEAM NUMBERS	SIZE		BOTTOM REINFORCEMENT				TOP REINFORCEMENT			SHEAR STIRRUPS	SFR	REMARKS
	B	D	STRAIGHT	CURTAILED	EXTRA LEFT	EXTRA RIGHT	STRAIGHT	EXTRA LEFT SUPP	EXTRA RIGHT SUPP			
B1	300	500	2-#20	-	1-#20 2-#20	1-#20 2-#20	3-#20	2-#20	2-#20	24-2L-#10@105,165,105 C/C	1-#20EF	-
B2	300	500	2-#20	-	1-#20 2-#20	1-#20 2-#20	3-#20	2-#20	2-#20	30-2L-#10@75,165,75 C/C	1-#20EF	-
B3	300	500	2-#20	-	1-#20	1-#20 2-#20	3-#20	2-#20	2-#20	33-2L-#10@105,165,105 C/C	-	-
B4	300	500	2-#20	-	-	-	2-#20	-	-	22-2L-#10@105,165,105 C/C	1-#20EF	-
B5	300	500	2-#20	-	-	-	2-#20	-	-	24-2L-#10@105,165,105 C/C	-	-
B6	300	500	2-#20	-	-	-	2-#20	-	-	33-2L-#10@105,165,105 C/C	-	-
B7	300	500	2-#20	-	1-#20	1-#20	3-#20	2-#20	2-#20	39-2L-#10@105,165,105 C/C	-	-
B8	300	500	2-#20	-	1-#20	1-#20	3-#20	2-#20	2-#20	33-2L-#10@105,165,105 C/C	-	-
B9	300	500	2-#20	-	1-#20	-	3-#20	2-#20	-	21-2L-#10@105,165,105 C/C	1-#20EF	-
B10	300	500	2-#20	-	-	1-#20	3-#20	-	2-#20	23-2L-#10@105,165,105 C/C	1-#20EF	-
B11	300	500	2-#20	-	1-#20 2-#20	1-#20 2-#20	3-#20	2-#20	2-#20	32-2L-#10@105,165,105 C/C	-	-
B13	300	500	2-#20	-	-	1-#20	3-#20	-	2-#20	10-2L-#10@165 C/C	1-#20EF	-
B14	300	500	2-#20	-	1-#20 2-#20	-	3-#20	-	2-#20	21-2L-#10@105,165,105 C/C	1-#20EF	-
B15	300	500	2-#20	-	-	1-#20 2-#20	3-#20	-	2-#20	23-2L-#10@105,165,105 C/C	1-#20EF	-
B16	300	500	2-#20	-	1-#20	-	3-#20	2-#20	-	10-2L-#10@165 C/C	1-#20EF	-
B17	300	500	2-#20	-	1-#20	1-#20	3-#20	2-#20	2-#20	44-2L-#10@105,165,105 C/C	-	-
B18	300	500	2-#20	-	1-#20 2-#20	1-#20 2-#20	3-#20	2-#20	2-#20	44-2L-#10@105,165,105 C/C	-	-
B19	300	500	2-#20	-	1-#20 2-#20	1-#20	3-#20	2-#20	2-#20	44-2L-#10@105,165,105 C/C	-	-
B20	300	500	2-#20	-	1-#20 2-#20	1-#20 2-#20	3-#20	2-#20	2-#20	28-2L-#10@105,165,105 C/C	1-#20EF	-
B21.B22	300	500	2-#20	-	1-#20 2-#20	1-#20 2-#20	3-#20	2-#20	2-#20	27-2L-#10@105,165,105 C/C	-	-
B23	300	500	2-#20	-	1-#20 2-#20	1-#20 2-#20	3-#20	2-#20	3-#20	26-2L-#10@105,165,105 C/C	1-#20EF	-
B24	300	500	2-#20	-	1-#20 2-#20	1-#20 2-#20	3-#20	3-#20	2-#20	26-2L-#10@105,165,105 C/C	-	-
B25.B32	300	500	2-#20	-	1-#20 2-#20	1-#20 2-#20	3-#20	2-#20	2-#20	26-2L-#10@105,165,105 C/C	-	-
B26	300	500	2-#20	-	1-#20 2-#20	1-#20 2-#20	3-#20	2-#20	3-#20	26-2L-#10@85,165,85 C/C	1-#20EF	-
B27	300	600	2-#20	-	1-#20 2-#20	1-#20 2-#20	3-#20	2-#20	2-#20	5-2L-#10@190 C/C	1-#20EF	-
B28	300	600	2-#20	-	1-#20	1-#20 2-#20	3-#20	2-#20	2-#20	25-2L-#10@120,190,120 C/C	-	-
B29	300	500	3-#20	-	-	2-#20	3-#20	2-#20	2-#20	29-2L-#10@105,165,105 C/C	-	-
B30	300	500	2-#20	-	1-#20	1-#20 2-#20	3-#20	2-#20	2-#20	27-2L-#10@85,165,80 C/C	1-#20EF	-
B31	300	500	2-#20	-	-	1-#20	3-#20	2-#20	2-#20	24-2L-#10@105,165,105 C/C	2-#20EF	-
B33	300	500	2-#20	-	1-#20 2-#20	1-#20 2-#20	3-#20	2-#20	2-#20	26-2L-#10@105,165,105 C/C	1-#20EF	-
B34	300	600	2-#20	-	1-#20	1-#20	3-#20	-	-	28-2L-#10@120,190,120 C/C	-	-
B35.B41	300	600	2-#20	-	1-#20	-	3-#20	-	-	10-2L-#10@120 C/C	1-#20EF	-
B36	300	600	2-#20	-	-	1-#20 2-#20	3-#20	-	2-#20	4-2L-#10@190 C/C	1-#20EF	-
B37	300	500	2-#20	-	-	-	2-#20	-	-	32-2L-#10@105,165,105 C/C	-	-
B38	300	500	2-#20	-	-	-	2-#20	-	-	11-2L-#10@105 C/C	-	-
B39	300	600	2-#20	-	1-#20 2-#20	-	3-#20	2-#20	-	4-2L-#10@190 C/C	1-#20EF	-
B40	300	600	2-#20	-	-	1-#20	3-#20	-	-	10-2L-#10@120 C/C	1-#20EF	-
B42	300	500	2-#20	-	1-#20 2-#20	1-#20	3-#20	2-#20	-	32-2L-#10@105,165,105 C/C	1-#20EF	-
B43	300	500	2-#20	-	1-#20	1-#20	3-#20	-	2-#20	32-2L-#10@105,165,105 C/C	2-#20EF	-
B44	300	500	2-#20	-	1-#20	1-#20	3-#20	2-#20	-	25-2L-#10@105,165,105 C/C	1-#20EF	-
B45	300	500	2-#20	-	1-#20	-	3-#20	-	-	11-2L-#10@105 C/C	1-#20EF	-


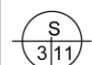
OWNER:  BONTOC CAMPUS	PROJECT TITLE: <b>CONSTRUCTION OF FISH PROCESSING PLANT FACILITY</b> SAN RAMON, BONTOC SOUTHERN LEYTE	CIVIL ENGINEER: <b>JOMMAR V. TAGALOG</b> PRC No. _____ PTR No. _____ TIN No. _____	NOTED BY: <b>JINKY F. LUMBRE</b> PPDMO-DESIGNATE	RECOMMENDING OFFICIAL: <b>GORDON B. OPINA</b> HEAD, ADMINISTRATION	APPROVED BY: <b>DEWOOWOOGEN P. BACLAYON, Ph.D</b> CAMPUS DIRECTOR	SHEET CONTENTS: <b>TIE BEAM LAYOUT</b>	SHEET NO.: 
---	---	--	--	--	---	---	---



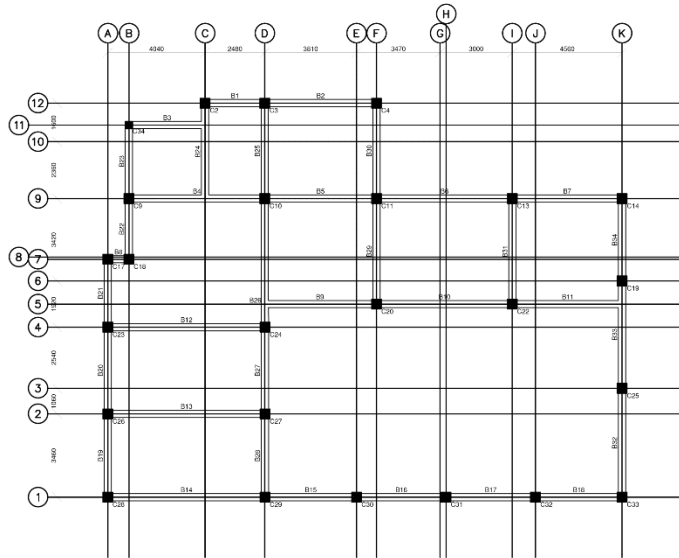
2ND FLOOR BEAM LAYOUT

BEAM SCHEDULE (C20-Fy414) (LEVEL: 7.4m)

BEAM NUMBERS	SIZE		BOTTOM REINFORCEMENT				TOP REINFORCEMENT			SHEAR STIRRUPS	SFR	REMARKS
	B	D	STRAIGHT	CURTAILED	EXTRA LEFT	EXTRA RIGHT	STRAIGHT	EXTRA LEFT SUPP	EXTRA RIGHT SUPP			
B1	300	600	2-#20	-	1-#20	-	3-#20	-	-	20-2L-#10@120,115 C/C	1-#20EF	-
B2	300	600	2-#20	-	-	1-#20	3-#20	-	2-#20	29-2L-#10@120,190,120 C/C	1-#20EF	-
B3	300	600	2-#20	-	-	-	2-#20	-	-	7-2L-#10@190 C/C	1-#20EF	-
B4	300	600	2-#20	-	-	-	2-#20	-	-	11-2L-#10@120 C/C	1-#20EF	-
B5	300	600	2-#20	-	-	-	2-#20	-	-	21-2L-#10@120,190,120 C/C	-	-
B6	300	600	2-#20	-	-	-	2-#20	-	-	29-2L-#10@120,190,120 C/C	-	-
B7	300	600	2-#20	-	-	1-#20	3-#20	-	3-#20	34-2L-#10@120,190,120 C/C	1-#20EF	-
B8	300	600	2-#20	-	1-#20	-	3-#20	-	-	29-2L-#10@120,190,120 C/C	1-#20EF	-
B9,B18	300	600	2-#20	-	-	-	3-#20	-	-	11-2L-#10@120 C/C	1-#20EF	-
B10,B19	300	600	2-#20	-	-	1-#20	3-#20	-	2-#20	21-2L-#10@120,190,120 C/C	1-#20EF	-
B11	300	600	2-#20	-	-	1-#20	3-#20	2-#20	2-#20	29-2L-#10@120,185,120 C/C	1-#20EF	-
B12	300	400	2-#20	-	-	-	3-#20 2-#20	-	-	7-2L-#10@140 C/C	1-#20EF	CANTILEVERED
B13	250	300	2-#20	-	-	-	2-#20	-	-	9-2L-#10@100 C/C	-	-
B15	300	600	2-120	1-#20	-	-	3-#20	-	-	39-2L-#10@120,190,190 C/C	1-#20EF	-
B16	300	600	2-#20	-	-	-	3-#20	-	-	2-2L-#10@285 C/C	-	CANTILEVERED
B17	300	600	2-#20	-	-	-	3-#20	-	-	9-2L-#10@190 C/C	1-#20EF	-
B20	300	600	2-#20	-	-	-	3-#20	-	2-#20	26-2L-#10@160,165,155 C/C	1-#20EF	-
B21	300	400	2-#20	-	-	-	3-#20	-	-	7-2L-#10@140 C/C	1-#20EF	-
B22,B24,B26	300	600	2-#20	-	-	1-#20	3-#20	2-#20	2-#20	39-2L-#10@120,190,120 C/C	1-#20EF	-
B23,B25	300	400	2-#20	-	-	-	3-#20	2-#20	-	3-2L-#10@140 C/C	1-#20EF	-
B27	300	600	2-#20	-	1-#20	-	3-#20	2-#20	-	24-2L-#10@120,190,120 C/C	1-#20EF	-
B28,B29	300	600	2-#20	-	-	-	3-#20	-	-	24-2L-#10@120,190,120 C/C	-	-
B30	300	600	2-#20	-	-	1-#20	3-#20	-	2-#20	23-2L-#10@120,190,120 C/C	1-#20EF	-
B31	250	300	2-#20	-	-	-	2-#20	-	-	22-2L-#10@100 C/C	1-#20EF	-
B32,B33,B34	250	300	2-#20	-	-	-	2-#20	-	-	13-2L-#10@100 C/C	-	-
B35	250	300	2-#20	-	-	-	2-#20	-	-	13-2L-#10@100 C/C	1-#20EF	-
B36	300	400	2-#20	-	-	-	3-#20 2-#20	-	-	5-2L-#10@140 C/C	1-#20EF	CANTILEVERED
B37	300	600	2-#20	-	1-#20	-	3-#20	2-#20	-	23-2L-#10@120,190,120 C/C	-	-
B38	300	600	2-#20	-	-	1-#20	3-#20	-	2-#20	23-2L-#10@120,190,120 C/C	-	-
B39	300	600	2-#20	-	1-#20	1-#20	3-#20	2-#20	-	24-2L-#10@120,105 C/C	1-#20EF	-
B43,B48	250	300	2-#20	-	-	-	2-#20	-	-	12-2L-#10@100 C/C	-	-
B44,B49	250	300	2-#20	-	-	-	2-#20	-	-	13-2L-#10@100 C/C	-	-
B45	250	300	2-#20	-	-	-	2-#20	-	-	5-2L-#10@100 C/C	1-#20EF	-
B46	300	400	2-#20	-	-	-	2-#20	-	-	5-2L-#10@140 C/C	-	-
B47	300	600	2-#20	-	-	-	3-#20	-	2-#20	24-2L-#10@190,190,110 C/C	1-#20EF	-
B50	250	300	2-#20	-	-	-	2-#20	-	-	5-2L-#10@100 C/C	-	-
B57	300	400	2-#20	-	-	-	2-#20	-	-	20-2L-#10@140 C/C	1-#20EF	-
B58	250	300	2-#20	-	-	-	2-#20	-	-	15-2L-#10@100 C/C	-	-
B59	250	300	2-#20	-	-	-	2-#20	-	-	14-2L-#10@100 C/C	-	-
B60,B66,B70	300	400	2-#20	-	-	-	2-#20	-	-	5-2L-#10@140 C/C	1-#20EF	CANTILEVERED
B61	300	600	2-#20	-	-	-	3-#20	-	-	28-2L-#10@120,190,120 C/C	-	-
B62,B69,B77	300	600	2-#20	-	-	-	3-#20	-	-	10-2L-#10@120 C/C	1-#20EF	-
B63	300	600	2-#20	-	-	1-#20	3-#20	-	-	4-2L-#10@190 C/C	1-#20EF	-
B64	300	400	2-#20	-	-	-	2-#20	-	-	37-2L-#10@80,140,80 C/C	-	-
B65	300	400	2-#20	-	-	-	2-#20	-	-	23-2L-#10@80,115,120 C/C	-	-
B67	300	600	2-#20	-	1-#20	-	3-#20	-	-	20-2L-#10@100,85 C/C	1-#20EF	-
B68	300	600	2-#20	-	-	-	3-#20	-	-	20-2L-#10@115,120 C/C	1-#20EF	-
B71	250	400	2-#20	-	-	-	2-#20	-	-	39-2L-#10@85,125,85 C/C	-	-
B72	250	400	2-#20	-	-	-	2-#20	-	-	23-2L-#10@85,125,85 C/C	-	-
B74	300	600	2-#20	-	-	-	3-#20	-	-	28-2L-#10@120,190,120 C/C	1-#20EF	-
B75	300	600	2-#20	-	-	1-#20	3-#20	-	2-#20	28-2L-#10@120,190,120 C/C	2-#20EF	-
B76	300	600	2-#20	-	1-#20	-	3-#20	-	2-#20	22-2L-#10@120,190,120 C/C	1-#20EF	-
B78	300	400	2-#20	-	-	-	2-#20	-	-	11-2L-#10@140 C/C	-	-

OWNER:	PROJECT TITLE:	CIVIL ENGINEER	NOTED BY:	REVISIONS/REVISIONS APPROVAL	APPROVED BY:	SHEET CONTENTS:	SHEET NO.:
	<b>CONSTRUCTION OF FISH PROCESSING PLANT FACILITY</b> SAN RAMON, BONTOC SOUTHERN LEYTE	<b>JOMMAR V. TAGALOG</b>	<b>JINKY F. LUMBRE</b> PPDMO-DESIGNATE	<b>GORDON B. OPINA</b> HEAD, ADMINISTRATION	<b>DEWOOWOOGEN P. BACLAYON, Ph.D</b> CAMPUS DIRECTOR	<b>2F BEAM LAYOUT</b>	
		PRC No.:					
		PTR No.:					
		TIN No.:					






ROOF BEAM LAYOUT (C20:Fy276) (LEVEL: 10.9m)

BEAM SCHEDULE (C20:Fy276) (LEVEL: 10.9m)

BEAM NUMBERS	SIZE		BOTTOM REINFORCEMENT			TOP REINFORCEMENT			SHEAR STIRRUPS	SFR	REMARKS	
	B	D	STRAIGHT	CURTAILED	EXTRA LEFT	EXTRA RIGHT	STRAIGHT	EXTRA LEFT SUPP				EXTRA RIGHT SUPP
B1	300	400	2-#20	-	-	-	3-#20	-	-	23-2L-#10@80,140.80 C/C	-	-
B2,B5,B7	300	400	2-#20	-	-	-	3-#20	-	-	38-2L-#10@80,140.80 C/C	-	-
B3	300	400	2-#20	-	-	-	2-#20	-	-	8-2L-#10@140 C/C	1-#20EF	-
B4,B26	300	400	2-#20	-	-	-	3-#20	-	-	45-2L-#10@80,140.80 C/C	1-#20EF	-
B6	300	400	2-#20	-	-	-	3-#20	-	-	45-2L-#10@80,140.80 C/C	-	-
B9	300	400	2-#20	-	-	-	3-#20	-	2-#20	12-2L-#10@140 C/C	1-#20EF	-
B10	300	400	2-#20	-	-	1-#20	3-#20	2-#20	2-#20	45-2L-#10@80,140.80 C/C	-	-
B11	300	400	2-#20	-	-	-	3-#20	-	2-#20	12-2L-#10@140 C/C	1-#20EF	-
B12	300	400	2-#20	-	1-#20	-	3-#20	2-#20	-	52-2L-#10@80,140.80 C/C	-	-
B13	300	400	2-#20	-	-	1-#20	3-#20	-	2-#20	52-2L-#10@80,140.80 C/C	-	-
B14	300	400	2-#20	-	-	-	3-#20	-	-	52-2L-#10@80,140.80 C/C	-	-
B15,B16,B17	300	400	2-#20	-	-	-	3-#20	-	-	32-2L-#10@80,140.80 C/C	-	-
B18,B20,B27	300	400	2-#20	-	-	-	3-#20	-	-	31-2L-#10@80,140.80 C/C	-	-
B19,B26,B34	300	400	2-#20	-	-	-	3-#20	-	-	39-2L-#10@80,140.80 C/C	-	-
B21	300	400	2-#20	-	-	-	3-#20	-	-	25-2L-#10@80,140.80 C/C	1-#20EF	-
B22	300	400	2-#20	-	-	-	2-#20	-	-	23-2L-#10@80,140.80 C/C	1-#20EF	-
B23	300	400	2-#20	-	-	-	2-#20	-	-	27-2L-#10@80,140.80 C/C	-	-
B24	300	400	2-#20	-	-	-	3-#20	-	-	10-2L-#10@140 C/C	1-#20EF	-
B25	300	400	2-#20	-	-	-	3-#20	-	-	33-2L-#10@80,140.80 C/C	-	-
B29,B31	300	400	2-#20	-	-	-	2-#20	-	-	36-2L-#10@80,140.80 C/C	-	-
B30	300	400	2-#20	-	-	-	2-#20	-	-	33-2L-#10@80,140.80 C/C	-	-
B32	300	400	2-#20	-	-	-	3-#20	-	-	37-2L-#10@80,140.80 C/C	-	-
B33	300	400	2-#20	-	-	-	3-#20	-	-	37-2L-#10@80,140.80 C/C	1-#20EF	-

OWNER:	PROJECT TITLE:	CIVIL ENGINEER:	NOTED BY:	REDESIGNED BY:	APPROVED BY:	SHEET CONTENTS:	SHEET NO:
	<b>CONSTRUCTION OF FISH PROCESSING PLANT FACILITY</b> SAN RAMON, BONTOC SOUTHERN LEYTE	<b>JOMMAR V. TAGALOG</b> PRC No. _____ PTR No. _____ TIN No. _____	<b>JINKY F. LUMBRE</b> PPDMO-DESIGNATE	<b>GORDON B. OPINA</b> HEAD, ADMINISTRATION	<b>DEWOOWOGEN P. BACLAYON, Ph.D</b> CAMPUS DIRECTOR	<b>ROOF BEAM LAYOUT</b>	